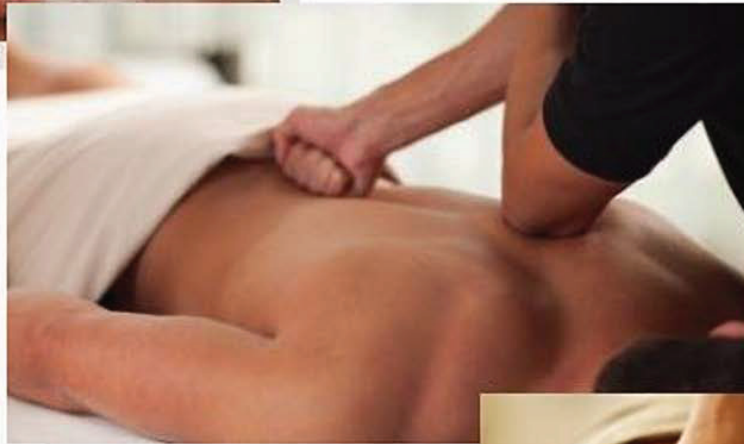




THOUSAND OAKS

DBA: THOUSAND OAKS
HEALING ARTS INSTITUTE



888 303 3131

2955 N MOORPARK RD
THOUSAND OAKS, CA 91360

www.a2zhealth.net

January 1,2023 - December 31,2023

SATELLITE: 3127 SANTA MONICA BLVD., SANTA MONICA, CA 90404

B.P.P.E School Code# 5602201 CAMTC School Code# SCH0029

All information in this catalog is subject to change without prior notice and does not constitute an agreement between A2ZHealth.Net, Inc. and the student.

TABLE OF CONTENTS

Letter from the Director.....	2
Mission Statement, Objectives, Approvals	3
Licensing, Placement Assistant.....	3
Required Statements.....	4
Admission - Enrollment Requirements.....	5
Transferability of Credits,.....	6
Registration, Tuition, and Other Fees	6
Withdrawal, Cancellation, Probation, Drop Policies.....	7
Refund Policy	8
Student Tuition Recovery Fund (STRF)	8-9
Bankruptcy Status	9
Student Records.....	10
Facility/Housing, Equipment, Materials, Library	10
Hygiene, Dress Code, Draping, Grievance Policies	11
Academic Progress & Clock Hours, Attendance	12
Leave of Absence, School Performance Fact Sheet	12
Requirements for Certification	13
Lab, Lecture, and Supervised Practicum Hours	13
Massage Therapist Program- 550 Hours	14
Massge Thearpist/Physical Therapy Aide-650 Hours	15
Holistic Bodywork Practitioner - 1000 Hours.....	16
Our Staff	17-18
Why Choose Our School & Contact.....	19

LETTER FROM THE DIRECTOR

Dear Prospective Student,

Thank you for your interest in our school. A2Z Health.Net, has been in business since 1998 with thousands of graduates who have found rewarding careers in resorts and day spas, hotels, medical & chiropractic offices. Many graduates went to open their own successful massage businesses.

The profession of massage therapy is booming. We have arranged our programs to accommodate the various requirements throughout the state of California. Our programs and advanced classes are designed to meet the needs of students with all levels of experience, as well as specific needs to the client.

Our professional staff works hard to provide the very best experience and personal growth to our students. Our goal is to allow you to begin your career as soon as you graduate, and to make you a successful professional massage therapist.

Our school offers a flexible financial payment plan, morning and evening classes, and many continuing education classes to choose from.

We will be glad to help you find the program that best meets your needs. Please contact our office with any questions you may have at
1-818-344-7184

For Better Health, **Dr. Ben Drillings** *Director*



MISSION STATEMENT

Our mission is to deliver the highest quality of education in a caring, safe, and supportive environment, producing graduates who are able to help themselves and others to experience increased health and well being through the Holistic Healing Arts. Our programs are well designed to prepare the students for a rewarding career. Our professional staff works hard to provide the very best experience and personal growth to our students and prepare them well enough to allow the students to begin a career as soon as they graduate. Building a solid curriculum at an affordable price enables more people to pursue this amazing and rewarding career.

OBJECTIVES

A2Z Health's primary educational objective is to provide topnotch, hands-on training geared toward preparing students to become highly employable through their incorporation of knowledge and experience. To provide knowledgeable and skilled massage therapist who will be an asset to any aspect of the Massage Therapy industry that they wish to pursue. To maintain a program that is continually updated so that students will acquire a thorough knowledge of the newest professional techniques.

APPROVALS

A2Z Health.Net, Inc. Massage School is a private institute and has a valid approval to operate issued by the Bureau for Private Post-secondary Education, and has met the minimum standard set forth in the Private Postsecondary Education Act of 2009. A2Z Health is also an approved school by the California Massage Therapy Council (CAMTC). A2Z Health.Net, Inc. is currently not accredited by any regional or national accrediting agency recognized by the USDE. Student enrolled in an unaccredited institution is not eligible for federal financial aid programs.

LICENSING

Please note that currently there is no state license for massage therapists in California. However, you may apply with the California Massage Therapy Council for Certification of Massage Therapist (500 Hours). In addition, you must follow local city business requirements. Each city may have different massage ordinance and it is at your discretion to determine the requirements in the city or county that you are interested in working in. Our staff will help you determine which program may be best for you.

PLACEMENT ASSISTANT

We are glad to be of assistance to our graduates, however, we cannot guarantee job placement nor can the school guarantee employment opportunities. Notices of employment opportunities are posted as they are received. You are encouraged to stop by the student services office to review them during office hours.

REQUIRED STATEMENTS

- “Any questions a student may have regarding this catalog that have not been satisfactorily answered by the institution may be directed to the Bureau for Private Postsecondary Education at: 1747 N Market Blvd. Suite 225, Sacramento, CA 95834. Website: www.bppe.ca.gov, Email: bppe@dca.ca.gov Tel: (888) 370-7589 Fax: (916) 263-1897”
- “As a prospective student, you are encouraged to review this catalog prior to signing an enrollment agreement. You are also encouraged to review the School Performance Fact Sheet, which must be provided to you prior to signing an enrollment agreement.”
- A student or any member of the public may file a complaint about this institution with the Bureau for Private Post- secondary Education by calling: (888) 370 7589 or by completing a compliant form, which can be obtained on the bureau’s internet website address at www.bppe.ca.gov
- Applicants for CAMTC certification shall have attended 500 supervised hours total with 100 of those hours satisfying CAMTC specified subjects.
- (1) Pursuant to California Business and Professions Code section 4611, It is an unfair business practice for a person to do any of the following:
 - (a) To hold himself or herself out or to use the title of “certified massage therapist” or “certified massage practitioner”, or any other term, such as “licensed”, “certified”, “CMT,” or “CMP”, in any manner whatsoever that implies or suggests that the person is certified as a massage therapist or massage practitioner, unless that person currently holds an active and valid certificate issued by the California Massage Therapy Council.
 - (b) To falsely state or advertise or put out any sign or card or other device, or to falsely represent to the public through any print or electronic media, that he or she or any other individual is licensed, certified, or registered by a governmental agency as a massage therapist or massage practitioner.
- Attendance and/or graduation from a California Massage Therapy Council approved school does not guarantee certification by CAMTC. Applicants for certification shall meet all requirements as listed in California Business and Professions Code section 4600 et. seq.
- A student or any member of the public with questions that have not been satisfactorily answered by the school or who would like to file a complaint about this school may contact the California Massage Therapy Council at One Capitol Mall, Suite 800, Sacramento, CA 95814, www.camtc.org, phone (916) 669-5336, or fax (916) 669-5337.

ADMISSION

Enrollment occurs throughout the year. Students may enroll monthly. You may contact our office for a list of enrollment dates. Once visiting our school, you will be required to fill out a registration form. You then will be getting a tour of the facility by one of our admission representatives. This will give you a chance to review the facility, classrooms, and labs and ask any questions you may have. You then will be notified if you have been accepted for enrollment. You will not be enrolled in the school without signing an enrollment agreement. Our school doesn't participate in any federal or state financial aid program.

Our school doesn't provide ESL (English as a second language) classes. Classes will be conducted in English. Applicant should demonstrate proficiency in English at an emerging level to perform the skill. An applicant who would like to enroll and is not able to understand the terms and conditions of the enrollment agreement, may invite a third party to review and explain the details of the enrollment agreement. At the event an employee is available to assist in explaining the terms and condition of the enrollment in the proper language, he or she may do so as a courtesy to the applicant. Some translated academic documents may be available but not guaranteed. A2ZHealth admit students from other countries but does not provide visa services or vouch for student's status.

A2ZHealth.Net, Inc. does not discriminate on the basis of age, race, color, sex, disability, sexual orientation, religion or national origin.

We are able to provide sight impaired student with a volunteer student to assist in reading the content. Hearing impaired students must provide their own signer as the school does not have the ability to provide such service.

ENROLLMENT REQUIREMENTS

A student shall enroll solely by means of executing an enrollment agreement. The enrollment agreement shall be signed by the student and by an authorized employee of the institution.

- You must be 18 years of age or older.
- You must meet physical requirements of the program in which you wish to enroll.
- You will be receiving a school catalog and review it with an admission representative.
- You will receive a copy of the School Performance Fact Sheet for the program in which you would like to enroll in. You will be required to sign the Fact Sheet after reviewing it and prior to enrolling in the school.

The enrollment agreement will be reviewed with you and the following information will be explained to you:

1. Cancellation, withdrew, and refund policies
2. Attendance policies
3. STRF protection
4. Financial Details and balance due
5. Non-refundable registration fee
6. Any questions you may have

- You will then be asked to sign and initial the enrollment agreement and pay the non-refundable registration fee.
- The admission representative will review your application and notify of your acceptance or rejection to the school.

PREVIOUS EDUCATION

Our institution has not entered into an articulation or transfer agreement with any other college or university. Our institution does not accept experiential credits.

TRANSFERABILITY OF CREDITS

“NOTICE CONCERNING TRANSFERABILITY OF CREDITS AND CREDENTIALS EARNED AT OUR INSTITUTION”

“The transferability of credits you earn at A2Z Health.Net, Inc. is at the complete discretion of an institution to which you may seek to transfer. Acceptance of the certificate you earn in the educational program is also at the complete discretion of the institution to which you may seek to transfer. If the educational program certificate that you earn at this institution is not accepted at the institution to which you seek to transfer, you may be required to repeat some or all of your coursework at that institution. For this reason, you should make certain that your attendance at this institution will meet your educational goals. This may include contacting an institution to which you may seek to transfer after attending A2Z Health.Net, Inc. Massage School to determine if your credits and certificate will transfer”

REGISTRATION, TUITION, AND OTHER FEES

Each program offered has a schedule of fees and charges. Registration fee is required to enroll in our school. This fee is non-refundable. Tuition can be done in full or by an arranged delayed payment plan. Payment can be made by check, credit card or money order. A \$25 service charge is billed for returned checks. Our school offers a very flexible payment plan.

A student, who obtains a loan, is obligated to repay the full amount of the loan plus interest, less the amount of any refund. If the student receives federal financial aid funds, the student is entitled to a refund of the money not paid from federal financial aid funds.

“For those programs designed to be four months or longer, an institution shall not require more than one term or four months of advance payment of tuition at a time. When 50 percent of the program has been offered, the institution may require full payment” s94899.5 (b)

“At the student option, an institution may accept payment in full for tuition and fees, including any funds received through institutional loans, after the student has been accepted and enrolled and the date of the first class session is disclosed on the enrollment agreement.” s94899.5 (e)

WITHDRAW AND CANCELLATION POLICY

Students have the right to cancel the Enrollment Agreement that a student signed for a program. A2Z Health.Net, Inc. shall refund 100 percent of the amount paid less the non-refundable registration fee, not to exceed \$250, if notice of cancellation is made through attendance at the first class session, or the seventh day after enrollment, whichever is later. Cancellation shall occur when students give a written Notice of Cancellation at the address of the school. Student can do it by mail, or email. Notice of Cancellation should show that the student no longer wishes to be enrolled in the school. If the student has been given books and equipment, student shall return them to the school within 7 days following the date of cancellation. If student fails to return these supplies in good condition within this period, the school may deduct its documented cost for the supplies from any refund that may be due to student.

SCHOOL PROBATION POLICY

Students who fail to meet satisfactory academic performance, fail to meet attendance requirements, or/and fail to comply with student code of conduct will be placed on probation. Student will be notified that he/she has been placed on probation and will be given the steps necessary to be removed from probation. Failure to comply with the program and the probation by the end of evaluation period can be resulted in a withdrawal of the student from the program. A student, who has corrected the deficiencies, will be notified that probation has been removed. A student can appeal a probation decision by challenging the records and meeting with the Assistant Director to review the documents. Student is still obligated to pay tuition due to the school while on probation.

SCHOOL DROP POLICY

Students may be dropped by the school for any of the following but not limited to reasons: Failure to comply with the program, medical excuses from physician, failure to adhere to policies specified in student handbook, failure to pay charges when due, breach of school's enrollment agreement, unacceptable conduct and behavior as deemed by management or instructors. In preparation for a career as healthcare professional, it is expected that the students conduct themselves in a professional and courteous manner toward their instructor(s) and fellow students.

Directions from the instructor(s) must be followed at all times.

Any individuals who are under the influence or possession of drugs, alcohol, weapon and/or other mind altering substances will be immediately excused from class and must meet with the Administrative Director or Director.

Sexually oriented comments, behaviors or suggestions are prohibited and will be ground for immediate dismissal from school.

This is a professional and reputable school where such behavior is not tolerated. Students may be re-admitted to program only upon approval from the director.

Whether termination of enrollment is voluntary or involuntary, students should realize that they remain obligated for the amount of tuition and fees due the school based on the refund policy.

Any breach of privacy or modesty is not tolerated. Any sexual overtures, explicit or implied are subject to immediate disciplinary action and dismissal.

REFUND POLICY

The student has the right to a full refund of all charges less the amount of non-refundable registration fee (not to exceed \$250) if the student cancels the enrollment agreement by the first day of instruction or the seventh day after enrollment occurs, whichever is later.

If the student has paid more than the amount that is owed for the time attended, then a refund will be made within 45 days of withdrawal. If the amount that the student owed the school is more than the amount student paid for time attended, student shall make arrangement to pay balance due. The school will also refund money paid by third party on student's behalf. You are obligated to pay only for educational services rendered until you have completed 60% of the course or enrollment period. After 60% completion, there is no refund due to student. The refund shall be the amount you paid for instruction multiplied by a fraction, the numerator of which is the number of hours of instruction which you have not received but for which you have paid, and the denominator of which is the total number of hours of instruction for which you have paid.

If the school discontinues a course or education program, the school will make a full refund of all charges.

STUDENT TUITION RECOVERY FUND (STRF)

The State of California established the Student Tuition Recovery Fund (STRF) to relieve or mitigate economic loss suffered by a student in an educational program at a qualifying institution, who is or was a California resident while enrolled, or was enrolled in a residency program, if the student enrolled in the institution, prepaid tuition, and suffered an economic loss. Unless relieved of the obligation to do so, you must pay the state-imposed assessment for the STRF, or it must be paid on your behalf, if you are a student in an educational program, who is a California resident, or are enrolled in a residency program, and prepay all or part of your tuition.

You are not eligible for protection from the STRF and you are not required to pay the STRF assessment, if you are not a California resident, or are not enrolled in a residency program.

It is important to keep copies of your enrollment agreement, financial aid documents, receipts, or any other information that documents the amount paid to the school.

Questions a student may have regarding the STRF may be directed to the:

Bureau for Private Postsecondary Education

1747 North Market Blvd., Suite 225, Sacramento, CA 95834, (916) 574-8900 or (888) 370-7589

To be eligible for STRF, you must be a California resident, or are enrolled in a residency program, prepaid tuition, paid or deemed to have paid the STRF assessment, and suffered an economic loss as a result of any of the following:

1. The institution, location of the institution, or an educational program offered by the institution was closed or discontinued, and you did not choose to participate in a teach-out plan approved by the Bureau or did not complete a chosen teach-out plan approved by the Bureau.
2. You were enrolled at an institution or a location of the institution within 120 days period before the closure of the institution or location of the institution or were enrolled in an educational program within the 120 days period before the program was discontinued.
3. You were enrolled at an institution or a location of the institution more than 120 days before the closure of the institution or location of the institution, in an educational program offered by the institution as to which the bureau determined there was significant decline in the quality or value of the program more than 120 days before closure.
4. The institution has been ordered to pay a refund by the Bureau but has failed to do so.
5. The institution has failed to pay or reimburse loan proceeds under a federal student loan Program as required by law or has failed to pay or reimburse proceeds received by the institution in excess of tuition and other costs.
6. You have been awarded restitution, a refund, or other monetary award by an arbitrator or court, based on violation of this chapter by an institution or representative of an institution, but have been unable to collect the award from the institution.
7. You sought legal counsel that resulted in the cancellation of one or more of your student loans and have an invoice for services rendered and evidence of the cancellation of the student loan or loans.

To qualify for STRF reimbursement, the application must be received within four (4) years from The date of the action or event that made the student eligible for recovery from STRF.

A student whose loan is revived by a loan holder or debt collector after a period of non-cancellation may, at any time, file a written application for recovery from STRF for the debt that would have otherwise been eligible for recovery. If it has been more than four (4) years since the action or event that made the student eligible, the student must have filed a written application for recovery within the original four (4) year period, unless the period has been extended by another act of law.

However, no claim can be paid to any student without a social security number or a taxpayer Identification number.

BANKRUPTCY STATUS

A2Z Health. Net Massage Schools does not have a pending petition in bankruptcy, is not operating as a debtor in possession, has not filed a petition within the preceding five years, or has not had petition in bankruptcy filed against it within the preceding five years that resulted in reorganization under Chapter 11 of the United States Bankruptcy Code (11 U.S.C. Sec. 1101 et seq.) Sec. 94909(a) (12)

STUDENT RECORDS

Student records are confidential. The school will maintain records of the name, address, email address and telephone number of each student who is enrolled in the school. The following records will be maintained permanently by the school:

- The certificate granted and date that certificate was granted.
- The student transcript which shows courses /programs taken, and grades earned.
- Other student records will be maintained for 5 years.

FACILITY AND HOUSING INFORMATION

Our facility is conveniently situated on a one floor modern building. We have ample free parking. Facility is fully equipped and daily maintained. The school does not offer housing accommodations for students. At this time, our school does not offer assistance in finding housing. Average cost of housing is approximately \$1000 to \$1,500 a month for a studio or single bed.

EQUIPMENT /MATERIAL/METHOD OF DELIVERY

For In Person Classes: lectures and practice will take place in a classroom setting. Massage tables will be used in the course to demonstrate hands on skills. Overhead projector, whiteboard, Skeleton, posters and more are used for lecture and visual instructions. Each student will receive textbooks and a school T- shirt. Students are responsible to bring their own sheets, lotions, and uniforms.

IDL (Interactive Distance Learning): Student must have access to a computer and internet. IDL classes will be conducted on zoom. Student expected to have their textbook, and notebook to take notes. Classes are synchronized. Camera must be on during zoom session. student may not engage in personal activities while attending zoom class.

STUDENT SERVICES

The facility offers a student store located in main lobby. Students may purchase supplies such as sheets, lotions, creams, books and more.

SCHOOL LIBRARY

A2Z Health.Net – Massage School takes pride in its great selection of Massage Therapy related books and videos. The library holds a representative collection of books that are available for student use before or after classroom hours. It includes books, and professional journals. Each of these items enriches the students' learning experience and helps them expand their knowledge about the profession. The library is located inside the massage school facility. It is open Monday through Friday from 9am to 5pm.



HYGIENE, DRESS CODE & DRAPING POLICIES

PROPER HYGIENE AND PROFESSIONAL ATTIRE ARE REQUIRED.

Student must tie up long hair, keep fingernails trimmed and clean. We request no cigarette odors and bad breath, which can be offensive to others. Professional attire is important in helping to establish and maintain a therapeutic environment. We suggest that you purchase scrubs or a scrub top to wear at school or school T-Shirt. No shorts, skirts, tank tops, tight fitting, revealing clothes are permitted. Closed toed shoes MUST be worn at all times in the school. You must wash your hands with soap and water for at least 20 seconds before and after each massage session, and anytime student use the restroom.

You must bring clean sheets to class on a daily basis. Sheets must be washed with hot water and laundry detergent.

Teacher has the right to dismiss a student home for the day if the student seems to be under the weather, ill, coughing and/or sneezing.

Draping the client properly is imperative to make them feel safe and relaxed during the massage. Only the area to be worked on should be uncovered, while the rest of the body is secure under the draping. Draping is done with the top sheet and can be tucked and folded like a 'diaper' under the legs to protect the groin area, and can be tucked under the arms when the clients is lying supine to protect the chest area. Proper draping will enable the client to relax and enjoy the massage experience, without worrying about being exposed. Every massage therapist learns proper draping skills and proper hygiene in the massage program.

GRIEVANCE RESOLUTION PROCEDURES

Use the following procedures to handle a complaint:

- Express concern in writing to your instructor.
If instructor cannot solve issue, write a request to the Administrative Director of the school.
- If complaint is still not resolved, write a letter of complaint to the Director of the school. The director should then respond to the request by meeting with the student. Each party to the complaint may be asked to present their version of the complaint.
- The Director Or Administrative Director will issue a resolution to the complaint.
- A student may direct any issues of their concern at any time to the Bureau for Private Postsecondary Education and is not required to take part in the internal procedure first.

ACADEMIC PROGRESS & CLOCK HOURS

Student must complete their programs within 1.5 times the scheduled program length. For completion of coursework students are awarded clock hours. A clock hour is one class period of approximately 60 minutes of length. The student is required to make quantitative progress toward program completion. Incomplete grade is not given, the student must complete each class entirely.

ATTENDANCE

Attendance is an important aspect of professionalism. Students are required to attend all classes as scheduled. Each class will keep a daily attendance record for each student and the instructor will mark absences and tardiness on it. You must attend the full class. A student will need to make up hours if arrived late or left early for class. If a student misses three consecutive days, unexcused, the student will be advised.

Any student who is seriously ill, hospitalized, or has a surgery must submit a written doctor's release on the day the student is returning to class.

LEAVE OF ABSENCE

The student may request a leave of absence from a course after instruction has started. This is a written agreement between the student and the school acknowledging that the student will be absent from class for a period and will return to make up the hours and work missed. Leave of Absence may be granted under special circumstances.

SCHOOL PERFORMANCE FACT SHEET

Each prospective student will receive a copy of the school performance fact sheet for the program they are interested in taking prior to signing an enrollment agreement. The performance Fact Sheet contains the following information:

- Completion rate for the program.
- Job placement rate for the program that is designed to lead to a particular career.
- License examination passage rate for which passage of a state licensing examination is required.
- Salary and wage information.
- Student will be required to initial the school performance fact sheet.

REQUIREMENTS FOR CERTIFICATION

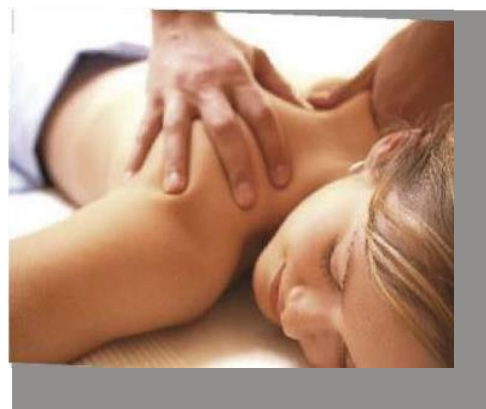
For all programs, student must satisfy the following:

- Completion of all classroom, lecture, and lab hours.
- A grade of 70% or better on all exams and quizzes.
- A grade of 70% or better on practical full body massage evaluations.
- Payment in full for all tuition charges due.

- **LAB, LECTURE, AND SUPERVISED PRACTICUM HOURS**

All students are required to complete the practical lab and supervised practicum hours in accordance with their program curriculum. Students are not getting monetary compensation for these hours. Furthermore, all materials necessary but not limited to such as: lotion, oils, sheets, and uniforms are solely at the student expense.

Community events, lectures, meetings, and projects are available throughout the year and will be announced to students. These hours provide students with confidence, direction, and experience necessary to succeed in the profession after graduating from school.



APPROVED PROGRAMS

According to the Bureau of labor statistics, the standard occupational code (SOC) for massage therapists is: 31-9011

Massage Therapist Program – 550 Hours

This program begins with core education in Swedish Massage techniques and practices, Anatomy, Physiology and Pathology and continues to include comprehensive education in advanced modalities such as Deep Tissue, Pregnancy Massage, Trigger Point, Sports and other Advanced Swedish techniques. Practicing in clinical settings and getting enhanced education in Business skills and ethics will equip the student with the skills needed to get employed in this rewarding field. In addition, it will allow the student, once graduating, to take a National recognized certification exam and apply for certification as a massage therapist with the California Massage Therapy Council (CAMTC).

This is a hybrid program with 195 hours delivered online via synchronized lectures on zoom platform, and 355 hours delivered In-Person. Calendar of classes and instructions will be provided upon enrollment.

IDL-Zoom:

Monday – Friday from 9am to 2pm or 5:30pm to 10:30pm

Classroom Hours:

Weekdays: 9:00am - 4:30pm

Or Weekends: 9:00am to 4:30pm

Fees

Tuition:	\$5,500.00
Registration	\$ 160.00(non-refundable)
Books	\$ 100.00
STRF Fee	\$ 15.00(\$2.5 per \$1000, non-refundable fee)
Total Tuition	\$5,775.00 Estimated Charges For The Entire Educational Program
	\$ 550.00 Total Charges Student Obligated To Pay Upon Enrollment
	\$5,225.00 Total Charges For The Current Period of Attendance

Massage Therapist / Physical Therapy Aide Program – 650 Hours

This advanced program offers specialized training for students interested in the profession of Massage Therapy with focus on Physiotherapy modalities. Students begin with the 550 hours Massage Therapist program and continue to study advanced modalities such as advanced sports, exercise, and massage rehab. Graduates of this program will be able to apply for certification with the California Massage Therapy Council (CAMTC) and take a national recognized exam.

This is a hybrid program. Calendar of classes and instructions will be provided upon enrollment.

IDL-Zoom Hours:

Monday – Friday from 9am to 2pm or 5:30pm to 10:30pm

Classroom Hours:

Weekdays: 9:00am – 4:30pm

Or Weekends: 9:00am to 4:30pm

Fees

Tuition:	\$6875.00
Registration:	\$ 160.00(non-refundable)
Books	\$ 142.50
STRF Fee	\$ 17.50(\$2.5 per \$1000, non-refundable fee)
Total Tuition	\$7195.00 Estimated Charges For The Entire Educational Program
	\$ 595.00 Total Charges Student Obligated To Pay Upon Enrollment
	\$6600.00 Total Charges For The Current Period of Attendance

Holistic Bodywork Practitioner – 1000 Hours

This advanced program offers specialized training for students interested in providing their clients with an integrated approach to health and wellness. Students begin in the core Swedish program and continue on to a variety of advanced courses. Our curriculum stresses the body-mind relationship and encourages the students to explore a wide spectrum of holistic techniques. We offer a balance of Eastern and Western massage techniques combined with a variety of natural therapies to encourage the student's personal and professional growth. This program is designed to develop well trained therapists who can assess their clients holistically and bring them to a state of wellbeing. This program satisfies the highest requirements of education in California and most of the United States.

This is a hybrid program. Calendar of classes and instructions will be provided upon enrollment.

IDL-Zoom:

Monday – Friday from 9am to 2pm or 5:30pm to 10:30pm

Classroom Hours:

Weekdays: 9:00am - 5:00pm

Or Weekends: 9:00am to 5:00pm

Advanced Electives: Call office for dates of advanced electives

Fees

Tuition:	\$11,795.00
Registration:	\$ 160.00(non-refundable)
Books	\$ 180.00
STRF Fee	\$ 30.00 (\$2.5 per \$1000,non- refundable fee)
Total Tuition	\$12,165.00 Estimated Charges For The Entire Educational Program
	\$ 645.00 Total Charges Student Obligated To Pay Upon Enrollment
	\$11,520.00 Total Charges For The Current Period of Attendance

OUR STAFF

Our faculty is comprised of practicing business professionals and qualified instructors that have a strong desire to teach and provide excellent education.

Dr. Ben Drillings, D.C. – Founder/Director

Dr. Drillings is the director of A2Z Health.Net, Inc. Family of Massage Schools. He is also the owner of Ben Drillings Chiropractic, Inc. Dr. Drillings graduated from New York Chiropractic College in 1990. He studied physical education and exercise physiology at C.W. Post College in Long Island University in New York. Dr. Drillings established the massage school in 1998 and since then seen thousands of graduates fulfill their goals and dreams. Dr. Drillings is a true believer in the benefits that massage has to offer. He is serving currently as the Director of California Massage Schools Association (CAMSA), He is the President of the California Chiropractic Assoc.-Ventura District Chapter and was previously a Board Member of the California Massage Therapy Council (CAMTC).

Lilah Drillings – Administrative Director

Lilah serves as the administrative director whose primary role is to oversee and maintain an optimal educational environment for all the students. She has an extensive background in business management and customer service, which allows her to cater to the individual needs of students. Her dedication to the student experience ensures that everyone is prepared for their career as a massage professional.

Sarit Marsiano – Billing & Student Services

Sarit maintains financial records and the tuition database for our students. She has an education in business finance and management and helps our students to stay on target to graduate.

Marty Dale Campbell, CMT– Lead Instructor

Mr. Campbell is a Certified Massage Therapist. He has over 30 years experience in the salon and spa field which provides our students with an industry experienced mentor. He wants to bring the healing power of the mind, spirit and body together through massage, meditation and visualization. He is committed to helping his students find the light within them.

Diane Furbeyre, DC – Instructor

Diane has been a part of the A2Zhealth School family for over 13 years. Diane received her Doctor of Chiropractic license in 1994. She attended the University of Southern California where most of her 6 siblings went to school, as well as her mother being the former head department librarian. Diane's experience in providing chiropractic care comes from a background in serving those with personal and work related injuries. Her knowledge and skills enable her to provide the students at A2Z Health with excellent anatomy, physiology, kinesiology and pathology instructions

Ruth Ayala, CMT -Instructor

Ruth is a certified massage therapist who has been a part of the A2ZHealth Family of massage school for over 15 years.

She has an extensive experience in the field of massage especially working with athletes. Ruth teaches many advanced modalities and specializing in Deep Tissue, sport massage and Trigger point. Her true passion is helping students reach their fullest potential.

Dr. Stuart Martin, DC- Instructor

Born and raised in the Midwest, Dr. Martin began his study of drug free, natural Healthcare in 1989, beginning Chiropractic School in 1993 and Graduating from Cleveland College of Chiropractic in Los Angeles in 1996. He has practiced Chiropractic in the Los Angeles area ever since. Dr. Martin is teaching Anatomy, physiology, pathology, kinesiology, Health & hygiene, and more.

Jamie Castillo, CMT – Instructor Jamie is a certified massage therapist who is a graduate of A2ZHealth Massage school. She has extensive background working under esteemed kinesiologists, physical therapists and Chiropractors in pain management and injury prevention. She loves what she does and elated with those who have chosen massage therapy as a career. Her hope is to embed in her students the love and enjoyment of massage therapy.

Linda Shelton, CMT – Instructor

Linda Shelton, certified massage therapist, educator, and Reiki master, who brings over 15 years' experience in the luxury spa, medical and private industry; specializing in a variety of modalities of both western and eastern philosophies of massage therapy. Her skills and leadership have led to employment opportunities with leading Los Angeles spas, Burke Williams Day Spa and Malibu Beach Inn, holding dual titles of massage therapist and spa manager. Her journey as an educator began with SpaRitual in 2017 and now she is an instructor for A2Z health massage school, where she prides herself on connecting students with their inner healer, encouraging a new generation of therapist to bring out the best in their abilities and helping them tap into how the art of healing empowers each student to shine in their own light.

Jenny Alcazar, CMT – Instructor Jenny has been a massage therapist for 22 years working in different industries of the massage profession. She brings her passion and knowledge to the classroom and teaches the students how to connect on a physical, emotional and spiritual level to this profession. Jenny specializes in Swedish massage, pregnancy, deep tissue, chair, lymphatic drainage and many more modalities. Recently, Jenny had to privilege to take part in an international massage competition.

Dragana Gobic, CMT - Instructor

Certified massage therapist, a Reiki Master/Teacher, Intuitive Healer, Health Coach, and Writer. She brings over 15 years of experience in holistic healing arts to her teaching at A2Zhealth Schools. Besides her extensive knowledge in Swedish techniques, and many massage modalities, she offers sessions and workshops in a variety of healing modalities including Reiki, Chakra Balancing, Sound Therapy, and Expressive Movement Meditation. She is deeply committed to creating a sacred safe space that empowers her students to embrace their own innate intelligence to heal themselves.

WHY CHOOSE OUR SCHOOL

- Hybrid Program
- Morning & Evening Classes
- Flexible financial plan
- Low cost tuition with quality education
- Experienced and supportive staff
- Many advanced classes to choose from
- On-site supply store
- Chiropractor on site to answer any questions
- Personal support and community like environment

CONTACT US

Office Hours:

Monday - Friday: 9:00am - 5:00pm Email: info@a2zhealth.com Website: www.a2zhealth.net

Classes will be held at

2955 N. Moorpark Rd., Thousand Oaks, CA 91360
or Satellite: 3127 Santa Monica Blvd., Santa Monica CA 90404

Call us today to schedule a private tour

1-888-303-3131

